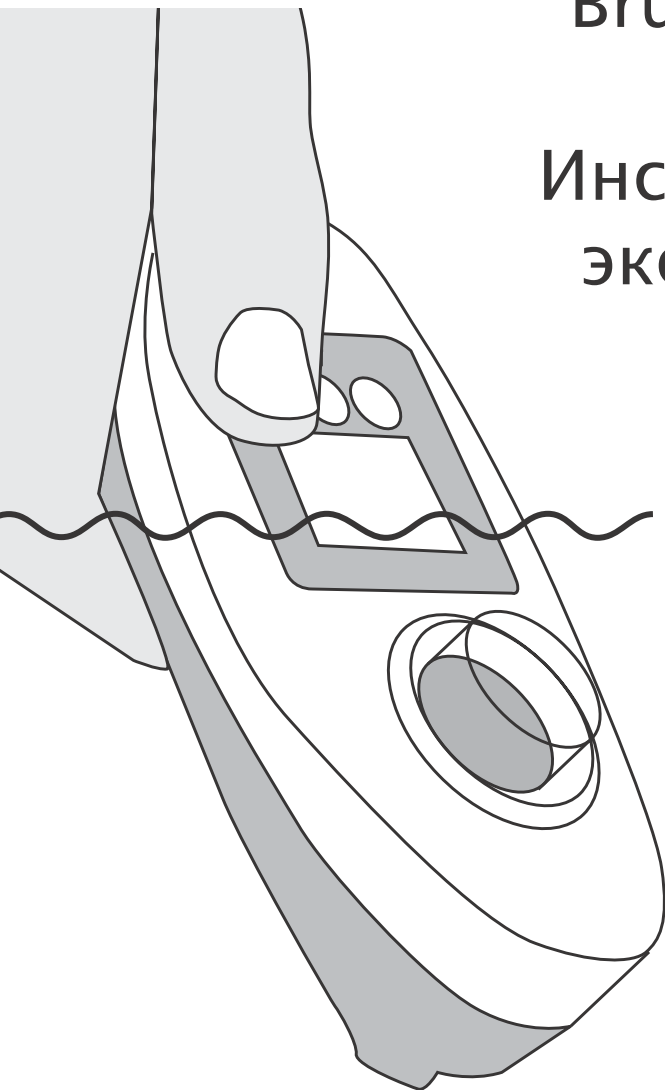


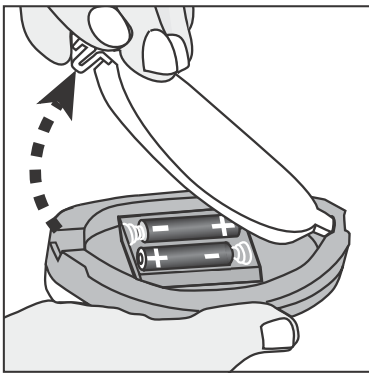
Electronic Pooltester

Scuba II

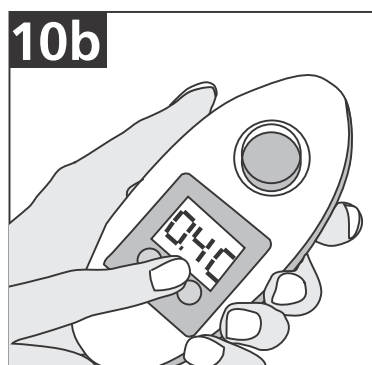
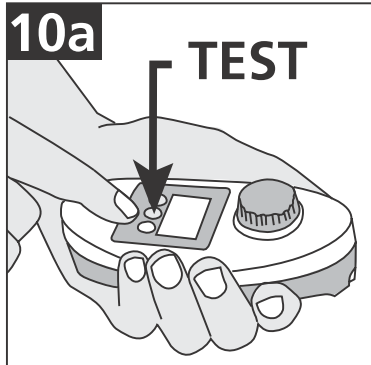
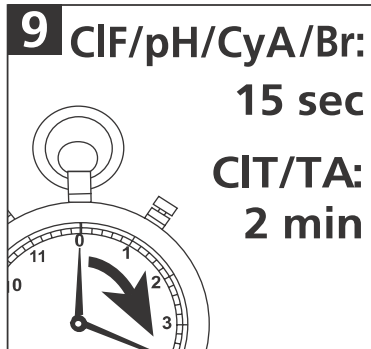
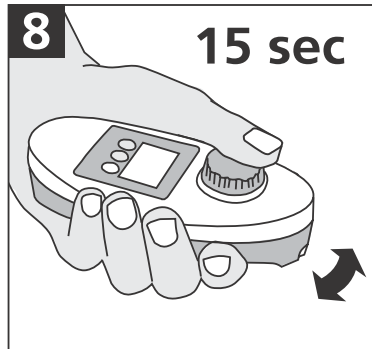
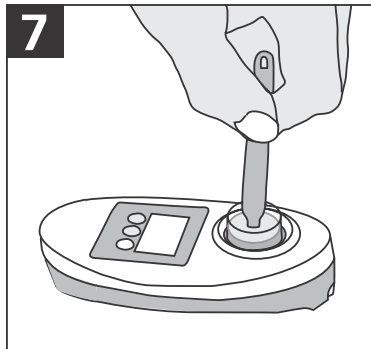
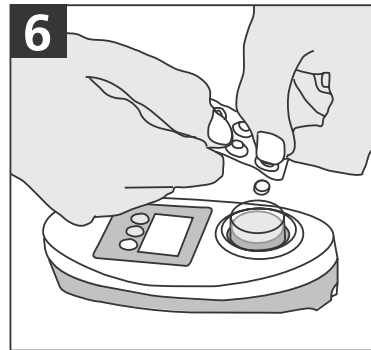
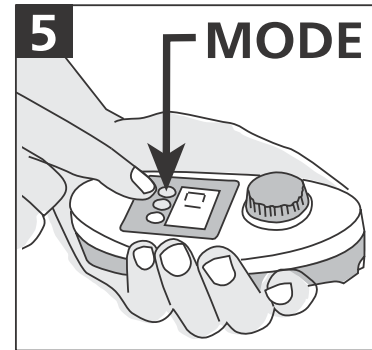
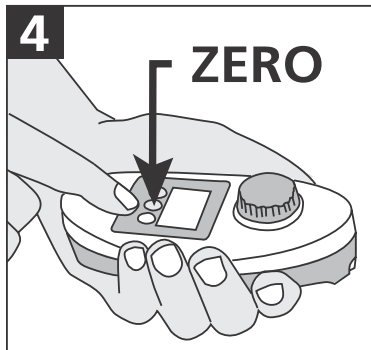
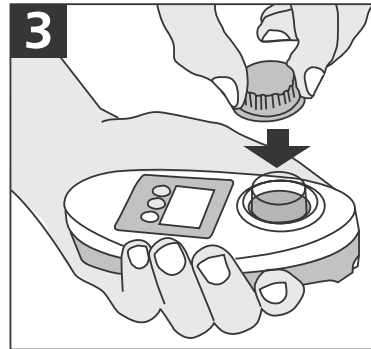
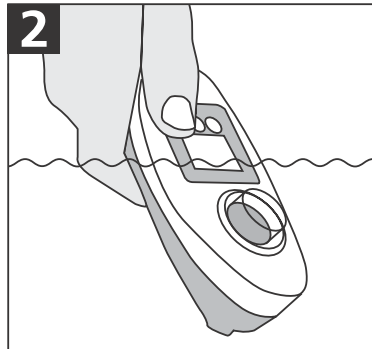
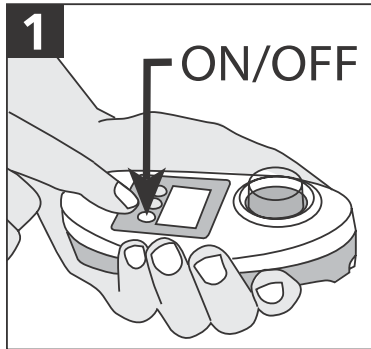
Instruction Manual	(GB)
Bedienungsanleitung	(DE)
Mode d'emploi	(FR)
Istruzioni per l'uso	(IT)
Manual de instrucciones	(ES)
Gebruiksaanwijzing	(NL)
Betjeningsvejledning	(DK)
Bruksanvisning	(SE)
Bruksanvisning	(NO)
Käyttöohje	(FI)
Инструкция по эксплуатации	(RU)



Free Chlorine/ (ClF)
Freies Chlor (ClF)
Total Chlorine/ (ClT)
Gesamtchlor (ClT)
pH (pH)
Cyanuric Acid (CyA)
Alkalinity/ (TA)
Alkalität (TA)
Bromine (Br)
Brom (Br)



Fitting the battery/ Batteriewechsel/ Remplacement des piles/ Sostituzione delle batterie/ Cambio de batería/ Batterijwissel/ Batteriskifte/ Batteribyte/ Batteriskifte/ Pariston asennus/ Замена батареей



Technical Data/ Technische Daten/ Données techniques/ Dati tecnici/ Datos técnicos/ Technische gegevens/ Teknische data/ Tekniska data/ Teknische data/ Tekniset tiedot/ Технические данные:

Cl : 0.1 - 6.0 mg/l Cl₂ (0-1 mg/l ± 0.1; 1-2 mg/l ± 0.2; 2-3 mg/l ± 0.4; 3-6 mg/l ± 0.5)

Br : 0.2 - 13.5 mg/l Br₂ (0 - 2 mg/l ± 0.2; 2 - 4 mg/l ± 0.4; 4 - 7 mg/l ± 0.8 mg/l; 7 - 13.5 mg/l ± 1.1 mg/l)

pH : 6.5 - 8.4 pH (± 0.2 pH)

CyA : 1 - 50 mg/l Cys (± 10 mg/l),
50 - 160 mg/l Cys (± 20 mg/l)

TA : 0 - 300 mg/l CaCO₃ (± 50 mg/l)

Light Source/ Optik/Optique/ Gruppo ottico/ Óptica/ Lens/ Optikk/ Optiikka/ Оптика:

LED: $\lambda = 530 \text{ nm}$

Battery/ Batterie/ Pile/ Batteria/ Batería/ Batterij/ Batteri/ Batterier/ Batteri/ Paristot/ Батарея:

2 x AAA (1.5 V), LR03

Auto-Off/ Arrêt automatique/ Spegnimento-automatico/ Automatisk sluk/ Automattinen sammutus/ автоматическое отключение:

300 sec

Ambient Conditions/ Umgebungsbedingungen/ Conditions ambiantes/ Condizioni ambientali/ Condiciones-ambientales/ Omgevings-condities/ omgivelses-betingelser/ Miljöför-hållanden/ Ympäristötiedot Lämpötila/ Окружающие условия:

T = 5-40°C

Waterproof/ Wasserdicht/ Étanchéité à l'eau/ Impermeabile/ Resistente al agua/ Waterdicht/ Kapslingsklasse/ Vattentät/ Vanntett/ Vesitiiviys/

Водонепроницаемость:

Analog IP68, 1 h @ 0.1 m

Conformity/ Konformität/ Conformité/ Conformità/ Conformidad/ Conformiteit/ Overensstemmelse/ Märkning/ Konformitet/ Vaatmustenmukaisuus/

Соответствие нормам: CE

Congratulations on your purchase of the Scuba II electronic pool tester. The tester is a battery-operated measuring device which determines the specific dissolved matter together with the included reagent tablets. The tester and the tablets are only intended for the designations mentioned in the table in non-commercial applications and may not be used for other purposes.

Please read through this manual and the special instructions carefully before using it for the first time.

Important notes

Tablet reagents are intended for chemical water testing and analysis only and may not be used for other purposes.



Caution

Potentially harmful if the tablet reagents are swallowed.

Do not swallow

Keep the tablet reagents out of the reach of children.

If swallowed, you can contact the Poison Center Berlin, Germany tel. no.: +49 30 30686 790 or find information in the safety data sheets with information on the risks and first aid measures at www.lovibond.com/support Download MSDS by entering the product name of the reagent tablets.

Before you start

Insertion and replacement of batteries:

Battery type 2 x AAA, LR 03, 1.5 V.

Only perform when the device is dry: Open the battery compartment on the underside of the device. Pay attention to the correct polarity of the batteries. Make sure that the battery compartment cover is firmly seated when closed.

Attention: Do not use rechargeable batteries!



Replace the batteries if this symbol appears in the display.

● Error messages



No.	Meaning and possible causes
01	Insufficient light at ZERO. Poss. cause: Duct contaminated or light path blocked; sample strongly coloured?
03	Division by 0. Poss. cause: Duct contaminated or light path blocked; sample strongly coloured?
20	Too much light at detector. Poss. cause: Cap not applied; measurement in bright sunlight
21	Too much light at detector. Poss. cause: Cap not applied; measurement in bright sunlight
22	LowBat occurred during measurement. Change battery, clean contacts

● Maintenance

1. Keep the instrument in a clean condition.
2. No solvent, abrasive materials or brushes should be used to clean the instrument. Clean the sample chamber using a soft tissue.
3. Dry the instrument when not in use, store under ambient environmental conditions.
4. Remove battery if instrument is being stored for an extended period.

● Trouble shooting

1. Use only blister tablets with black printing.
2. Do not touch the tablets. This can cause contamination and give poor results.
3. Close the blue lid on top of the sample chamber tightly before zeroing/reading.
4. Always ensure that the sample chamber, the lid and the stirring rod are thoroughly rinsed when changing from one test to the other.

Warranty

The waterproof Scuba II is warranted to be free from manufacturing defects for two years.

Operation (see pictures)



1. Switch the unit on using the ON/OFF key.
The display shows: "0". Make one Zero for all the methods:
2. Swirl the instrument several times under the water surface allowing the sample chamber to completely fill. Take the instrument out of the water.
3. Close the lid tightly.
4. Press the ZERO/TEST key. "000" flashes for approx. 8 seconds. The display shows "0.0.0".
5. Select the test required using the MODE key:
Cl (free Chlorine/ total Chlorine) → pH → TA → CyA → Br → Cl ... (Scroll).
6. Open the lid and add the appropriate tablet straight from the foil.

Method	appropriate tablet
ClF : Free chlorine (ClF)	DPD No.1
ClT : Total chlorine (ClT)	DPD No.1 + DPD No.3
pH : pH Value	PHENOL RED PHOTOMETER
CyA : Cyanuric acid	CyA-Test
TA : Alkalinity-M	ALKA-M-PHOTOMETER
Br : Bromine	DPD No. 1

7. Crush the tablet using a clean stirring rod.
Stir until the tablet is dissolved.
8. Close the lid and swirl the instrument gently for approx. 15 seconds.
9. Afterwards keep the instrument steady and wait for 15 seconds when testing ClF/pH/CyA/Br and 2 minutes when testing ClT and TA.
10. Press "Zero/Test". The "---" symbol flashes for approx. 6 seconds. The result appears in the display (mg/l). Or:

LOW
HIGH

Result below lowest limit of measuring range
Measuring range exceeded

Repeat Test Press the "Zero/Test"-key

Change Method Take new sample.

Press the "Mode"- key to scroll down. Perform test.

New zero (Option)

Press the "Zero/Test"-key for 2 sec.

Conversion Table for water hardness

	mmol/l $K_{S4.3}$	°dh	°e	°f
1 mg/l $CaCO_3 \triangleq$	0.02	0.056	0.07	0.10



Important disposal instructions for batteries and accumulators

EC Guideline 2006/66/EG requires users to return all used and worn-out batteries

and accumulators. They must not be disposed of in normal domestic waste. Because our products include batteries and accumulators in the delivery package our advice is as follows :

Used batteries and accumulators are not items of domestic waste. They must be disposed of in a proper manner. Your local authority may have a disposal facility; alternatively you can hand them in at any shop selling batteries and accumulators. You can also return them to the company which supplied them to you; the company is obliged to accept them.



Important Information To Preserve, Protect and Improve the Quality of the Environment Disposal of Electrical Equipment in the European Union

Because of the European Directive 2002/96/EC your electrical instrument must not be disposed of with normal household waste!

Tintometer GmbH will dispose of your electrical instrument in a professional and environmentally responsible manner. This service, **excluding the cost of transportation** is free of charge.

This service only applies to electrical instruments purchased after 13th August 2005.

Send your electrical Tintometer instruments for disposal freight prepaid to your supplier.